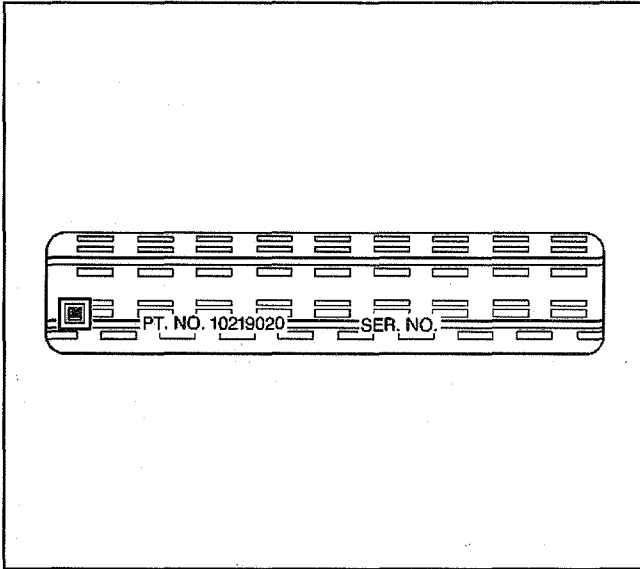


Labeling - Anti-Theft

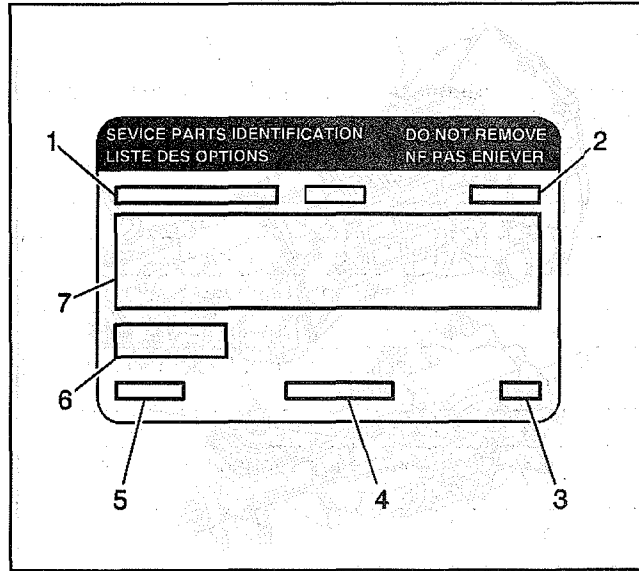


175291

Federal law requires that General Motors label certain body parts on every vehicle with the VIN. The purpose of the law is to reduce the number of motor vehicle thefts by helping in the tracing and recovery of parts from stolen vehicles.

The labels are permanently affixed to an interior surface of the part. The label on a replacement part contains the letter R, the manufacturer's logo, and the DOT symbol.

Label - Service Parts ID



65485

Legend

- (1) Vehicle Identification Number
- (2) Engineering Model Number (Vehicle Division, Vehicle Line and Body Style)
- (3) Interior Trim and Decor Level
- (4) Exterior (Paint Color) WA Number
- (5) Paint Technology
- (6) Special Order Paint Colors and Numbers
- (7) Vehicle Option Content

The Service Parts Identification Label aids the service personnel in identifying the parts and options originally installed on the vehicle.

RPO Code List

The production/process codes provide a description of the Regular Production Options (RPOs) used on the Camaro and Firebird. The RPO list is printed on the Service Parts Identification Label. The following is a list of the RPO abbreviations and the description of each:

RPO Table

RPO	Description
A26	Window Glazing, European
AG1	Driver Front Seat, Power Adjuster
AH3	Front Seat, Manual 4-Way Adjuster
AK5	Inflatable Restraint System, Driver and Passenger
AN4	Restraint Provisions, Child
AQ9	Front Seat, Driver and Passenger Recline
AR9	Front Bucket Seat, Deluxe European Style
AU0	Remote Entry Lock Control
AU3	Side Door Elec Lock Control
AX4	Restraint Conversion Seat, Manual European
A31	Window, Power Operated Side
A90	Lock Control, Rear Compt Lid Remote Elec Release
B35	Covering Rear Floor Mats
B4C	Sales Special Service Pkg (Police)
B84	Molding, B/S Exterior
CC1	Roof Hatch Removable Panels, Glass
C49	Rear Window Defogger, Electric
C60	HVAC System AC Man Controls
DD9	Mirror, O/S LH & RH Remote Control Electric Color
DE4	Sunshade, Removable Hatch Roof
DG7	Mirror, O/S LH & RH Remote Control Electric Color
D21	Sunshade, Windshield
D35	Mirror, O/S LH Remote Control, RH Manual Color
D82	Paint Special
FE2	Suspension System, Ride and Handling
FE4	Suspension System, Special Ride and Handling
FE7	Suspension System, Front and Rear Heavy Duty
FE9	Certification Emission-Federal
F41	Suspension System, Front and Rear Firm Ride and Handling
GU2	Axle Ratio 2.73
GU4	Axle Ratio 3.08
GU5	Axle Ratio 3.23
GU6	Axle Ratio 3.42

RPO Table (cont'd)

RPO	Description
G80	Axle Positraction
IL2	Trim, Interior Leather (W/AQ9) Pontiac
IL4	Trim, Interior European Camaro
IL5	Trim, Interior (w/AQ9) Pontiac
IPB	Trim, Interior Cloth Camaro and Firebird
IPD	Trim, Interior (w/AR9) European Camaro
IP2	Trim, Interior Leather Camaro
IP3	Trim, Interior Leather Pontiac
JAF	Brake Provisions, European
J65	Brake System, PWR Front and Rear Disc
K05	Heater, Engine Block
K29	Module Powertrain Control, Export
K34	Cruise Control, Automatic
K68	Generator, 105 Amp
LS1	Engine, Gas V8 5.7L SFI Aluminum
L36	Engine, Gas V6 3.8L MFI HO
M49	Transmission, Manual 5 Speed OD
MM6	Transmission, Manual 6 Speed OD
M30	Transmission, Auto 4 Speed Electronic
NK3	Steering Wheel, Sport Soft Rim Simulated Leather
NM8	Leaded Fuel System Compatible, European
NP5	Steering Wheel, Leather Wrapped
NP7	Steering Column, EEC Approved
NW9	Traction Control, Electronic
N36	Steering Wheel, 4 Spoke Sport
N60	Wheel, Aluminum Painted
N66	Wheel, Styled Aluminum 17" 5 Spoke Polished
N73	Wheel, Custom Sport Var4 17" (Restricted to Camaro SS)
N92	Cover, Wheel Bolt-on
N96	Wheel, 16 X 8 Cast Aluminum
N98	Wheel, 16 X 8 Cast Aluminum Chrome
PA6	Wheel, Styled Painted 16"
P05	Wheel, Styled Chrome 16"
QA9	Wheel, 17 X 9 Aluminum Painted (Blue Tint)
QB3	Wheel, 16 X 7.5 Steel
QCB	Tire, All P235/55R16 BW
QEA	Tire, All P215/60R16 BW
QFK	Tire, All P275/40R17 BW
QFZ	Tire, All P245/50R16 BW
QLC	Tire, All P245/50R16 BW

RPO Table (cont'd)

RPO	Description
TR7	Headlamps, Control Leveling System Automatic
T1G	Vehicle, Military Personnel
T37	Lamp, Fog Deluxe
T39	Lamp, Turn Signal Aux
T43	Spoiler, Rear
T62	Lighting, Daytime Running Delete
T65	Lighting, Daytime Running Export
T78	Headlamp Control, Delete
T79	Lamp, Fog Rear
T82	Headlamp Control, Automatic ON-OFF
T84	Headlamps, RH Rule of Road
T85	Headlamps, LH Rule of the Road
T89	Lamp, Tail & Stop Export
T96	Lamp, Fog
UA6	Theft Deterrent System
UB3	Cluster, Inst Oil Cool Temp Volts Trip Odom Tach
UC2	Speedometer, Inst Kilo Positive Bias
UK3	Electronic System Steering Wheel Acc Controls
UL0	Radio, AM/FM Stereo Auto Rev Music Srch Cass Clock ETR
UM6	Radio, AM/FM Stereo Auto Rev Cass Clock ETR
UN0	Radio, AM/FM Stereo Compact Disc Auto Tone Clock
UQ0	Speaker Sys, 4 Dual Frt Dr Mtd Dual STD RGE Qtr/Shelf
UW3	Radio, AM/FM Stereo Auto Rev Music Search Cass Data Sys
UZ7	Speaker System, 8 Quat Frt Dr Mtd Dual RR Hatch Amplifier
U1S	Player, Multiple Compact Disc
U62	Speaker System, 4 Dual Coax Frt Dual Coax PKG Shelf
U73	Antenna, Fixed Radio
U75	Antenna, Power Radio
VK3	License Plate, Front Mounting Pkg
VL4	License Plate, Rear Mounting Pkg
V12	Cooling System, Power Steering
V76	Hook, Tow
WS6	Performance Package Special
WS9	Model Conversion, Formula
WU6	Sales Package, Firehawk Upfitter
WU8	Sales Package, Z28 SS
W52	Entertainment System Option B
W53	Entertainment System Option C
W54	Entertainment System Option D
W55	Entertainment System Option E (MONSOON)

RPO Table (cont'd)

RPO	Description
W59	Entertainment System Option I
W66	Merchandised Pkg, Formula
W68	Sales Package, Firebird Upfitter
W73	Entertainment System Option J
X10	Entertainment System, Option I
X20	Entertainment System, Option J
Y3F	Sales Package, RS Camaro
Y81	Merchandised Pkg, Firebird
Y82	Merchandised Pkg, Trans Am
Y84	Merchandised Pkg, Trans Am GTA
Y87	Merchandised Pkg, Performance Enhancement
Z5X	Mirror Provisions, Arabic Language
01U	Primary Color, Exterior Special
1LE	Performance Package, Component Special
1OI	Interior Trim, Arctic White
10Q	Molding Color, Arctic White
10T	Top Color, Arctic White
10U	Primary Color, Exterior Arctic White
11Q	Molding Color, Pewter Metallic
11U	Exterior Color, Pewter Metallic
102	Trim Combination, Leather Arctic White Camaro and Firebird
103	Trim Combination, Leather Arctic White Pontiac
105	Trim Combination, Leather Arctic White Pontiac
14B	Trim Combination, Cloth Dark Gray
14D	Trim Combination, Cloth Dark Gray
14I	Interior Trim, Very Dark Gray
142	Trim Combination, Leather Very Dark Gray Camaro and Firebird
143	Trim Combination, Leather Very Dark Gray Firebird
144	Trim Combination, Leather Very Dark Gray Camaro
20Q	Molding Color, Blue Metallic
20U	Exterior Color, Blue Metallic
28Q	Molding Color, Navy Blue Met
28U	Primary Color, Exterior Navy Blue Metallic
31Q	Molding Color, Bright Green
31U	Primary Color, Exterior Bright Green
36Q	Molding Color, Fern Green
36U	Exterior Color, Fern Green
41Q	Molding Color, Black
41T	Top Color, Black
41U	Primary Color, Exterior Black
52B	Trim Combination, Cloth Light Neutral

## RPO Table (cont'd) Labels - How to Obtain Replacement

RPO	Description
52D	Trim Combination, Cloth Light Neutral
52I	Interior Trim, Medium Neutral
522	Trim Combination, Leather Light Neutral
523	Trim Combination, Leather Medium Neutral II
524	Trim Combination, Leather Medium Neutral
56T	Top Color, Medium Dark Neutral
63Q	Molding Color, Sport Gold
63U	Exterior Color, Sport Gold
73B	Trim Combination, Cloth Flame Red
73I	Interior Trim, Flame Red
79Q	Molding Color, Mystic Teal
79U	Primary Color, Exterior Mystic Teal
81Q	Molding Color, Bright Red
81U	Primary Color, Exterior Bright Red
88Q	Molding Color, Bright Purple
88U	Primary Color, Exterior Bright Purple
92B	Trim Combination, Cloth Medium Pewter
92I	Interior Trim, Pewter
96Q	Molding Color, Cayenne Red
96U	Primary Color, Exterior Cayenne Red Metallic
99Q	Molding Color, Hugger Orange
99U	Exterior Color, Hugger Orange

Obtain replacements for the following labels through the GM Service Parts Operations:

- The vehicle emission control information (exhaust emission tune-up) label
- The spare wheel caution label
- The jacking label
- The serpentine belt routing label
- The engine fan caution label
- The spare tire storage label

The following labels are not available as service parts:

- The vehicle certification label
- The tire pressure placard
- The service parts identification label

### Fasteners

#### Metric Fasteners

This vehicle is dimensioned in the metric system. Most metric fasteners are very close in diameter to well known fasteners in the English (inch) system. Replace fasteners with those of the same nominal diameter, thread pitch, and strength.

A number marking identifies the OE metric fasteners (except cross-recess head screws). The number also indicates the strength of the fastener material. A Posidrive® or Type 1A cross-recess identifies a metric cross-recess screw. For best results, use a Type 1A cross-recess screwdriver, or equivalent, in Posidrive® recess head screws.

GM Engineering Standards and North American Industries have adopted a portion of the ISO-defined standard metric fastener sizes. The purpose of this was to reduce the number of fastener sizes used while retaining the best thread qualities in each thread size. For example, the metric M6.0 X 1 screw, with nearly the same diameter and 25.4 threads per inch replaced the English 1/4-20 and 1/4-28 screws. The thread pitch is midway between the English coarse and fine thread pitches.