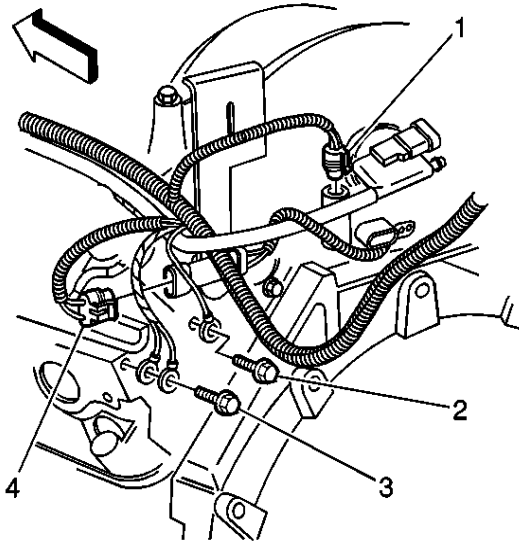


Engine Oil Pressure Sensor and/or Switch Replacement

Tools Required

[J 41712](#) Oil Pressure Sensor Socket

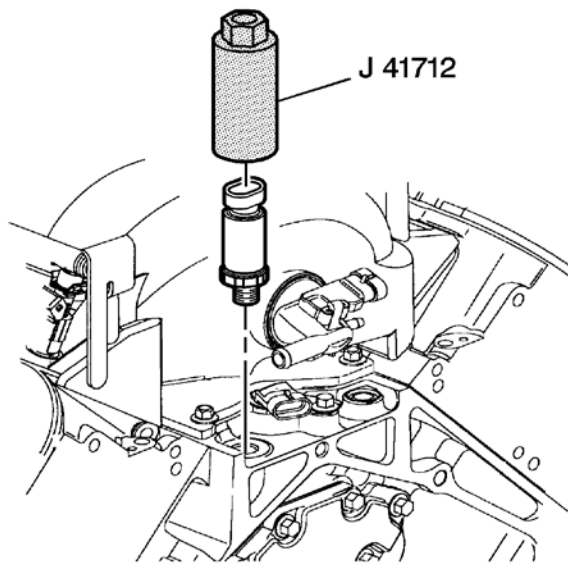
[Removal Procedure](#)



1. Remove the intake manifold. Refer to [Intake Manifold Replacement](#) .
2. Disconnect the oil pressure sensor electrical connector (1).

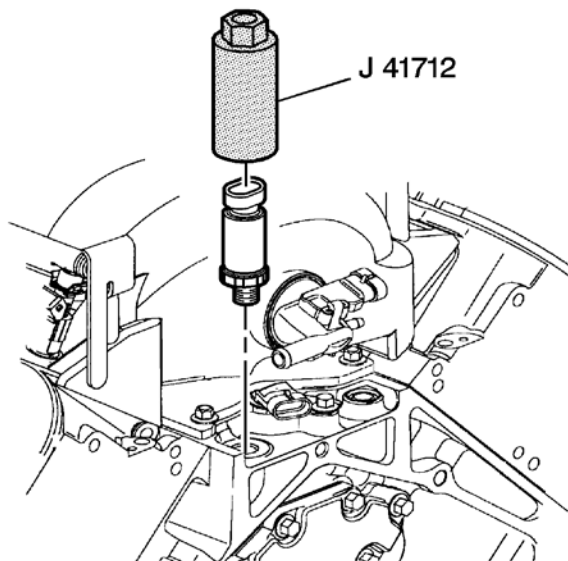
Important

Clean the area around the sensor before removal. This avoids debris from entering the engine.



3. Use [J 41712](#) to remove the oil pressure sensor from the engine block.

Installation Procedure



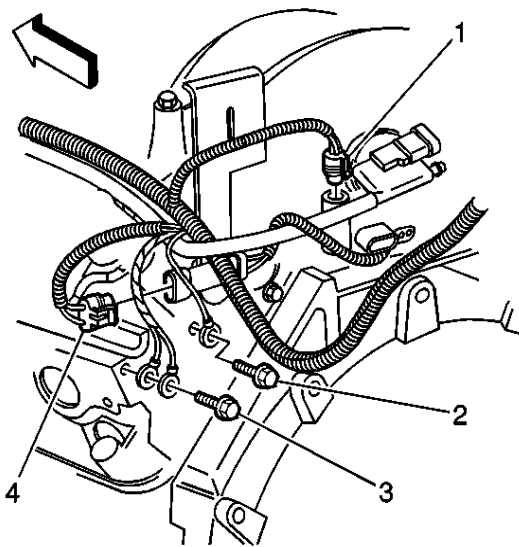
1. If installing the old sensor, apply thread sealant GM P/N 12346004,(Canadian P/N 1093480), or equivalent.

Notice

Use the correct fastener in the correct location. Replacement fasteners must be the correct part number for that application. Fasteners requiring replacement or fasteners requiring the use of thread locking compound or sealant are identified in the service procedure. Do not use paints, lubricants, or corrosion inhibitors on fasteners or fastener joint surfaces unless specified. These coatings affect fastener torque and joint clamping force and may damage the fastener. Use the correct tightening sequence and specifications when installing fasteners in order to avoid damage to parts and systems.

2. Use [J 41712](#) to install the oil pressure sensor to the engine block. **Tighten**

Tighten the engine oil pressure sensor to 20 N·m (15 lb ft).



3. Connect the oil pressure sensor electrical connector (1).
4. Install the intake manifold. Refer to [Intake Manifold Replacement](#) .