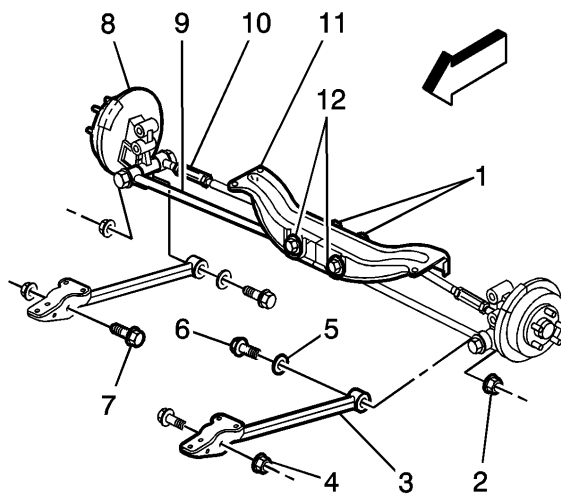


# Rear Wheel Spindle Rod Replacement

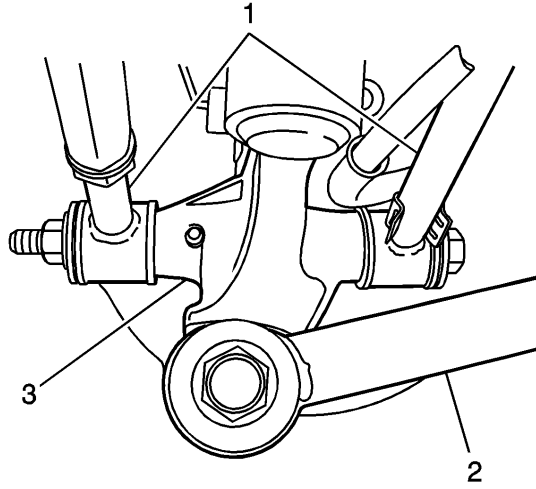
## Removal Procedure

1. Raise and support the vehicle. Refer to [Lifting and Jacking the Vehicle](#) .
2. Remove the tire and wheel assembly. Refer to [Tire and Wheel Removal and Installation](#) .



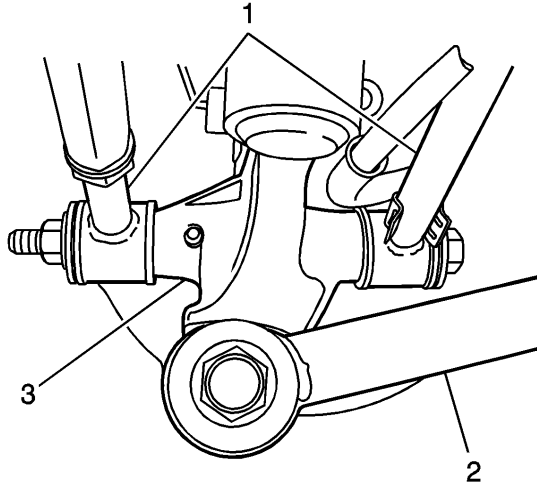
**Important:** Use a transmission jack or suitable hoist stands to prop the rear suspension support.

3. Lower the rear suspension support to gain clearance to the spindle rod to suspension support bolt. Refer to [Support Replacement](#) .
4. Remove the bolt (1 or 2) and nut from the spindle rod and the rear suspension support.

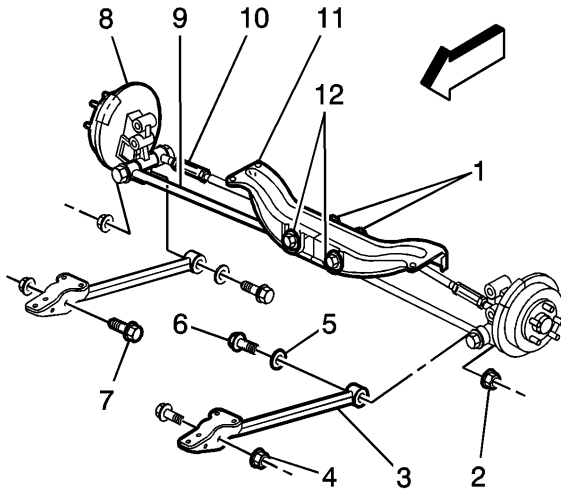


5. Remove the spindle rod to knuckle bolt and nut.
6. Remove the spindle rod (1) from the vehicle.

## **Installation Procedure**



1. Install the spindle rod (1) to the vehicle.
2. Install the spindle rod (1) to the knuckle (3).
3. Install the spindle rod to knuckle bolt and nut. Do not tighten at this time.



4. Install the spindle rod (9, 10) to the rear suspension support.

**Notice:** Refer to [Fastener Notice](#) in the Preface section.

5. Install the bolt (1, 2) and nut to the rear suspension support.

**Tighten**

Tighten the bolt to 135 N·m (100 lb ft).

6. Install the rear suspension support. Refer to [Support Replacement](#) .

**Tighten**

Tighten the bolt to 150 N·m (110 lb ft).

7. Install the tire and wheel assembly. Refer to [Tire and Wheel Removal and Installation](#) .
8. Lower the vehicle.
9. Adjust the wheel toe angle. Refer to [Wheel Alignment Specifications](#) .